

⚠ WARNING: Unit should be moved and operated by authorized adults only! Children and students should NEVER move or operate units. Always place the bench seat in the CLOSED position BEFORE moving to a new location. Failure to follow warnings may result in serious injury or death.

Installing Casters:

(For CBU's shipped on pallets)

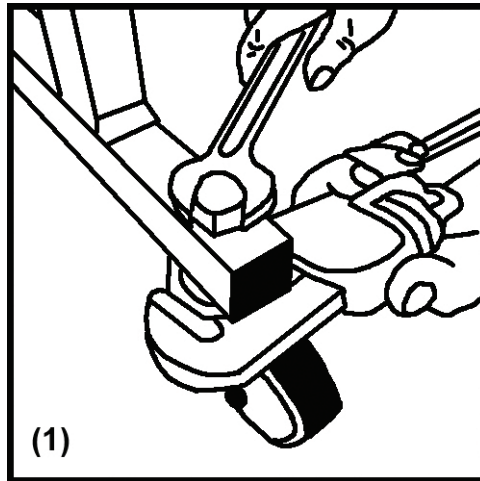
Tools Required:

- 3/4" open end wrench
- "Water pump" type wrench with a working range of 1-7/8"

1) The units may be tipped forward or backward. **A blanket should be used to protect laminate and edging.**

2) Insert caster stem into hole and hand tighten with acorn nut. Set wrench around caster nut while using 3/4" open end wrench to tighten acorn nut. Install locking casters to the rear end of unit.

See Figure '1':



Setting up (2) CBU's for Cafeteria-Type Seating:

(See operating instructions below)

1) Set up (2) units into the table position rotated so the tops face each other and line up end-to-end.

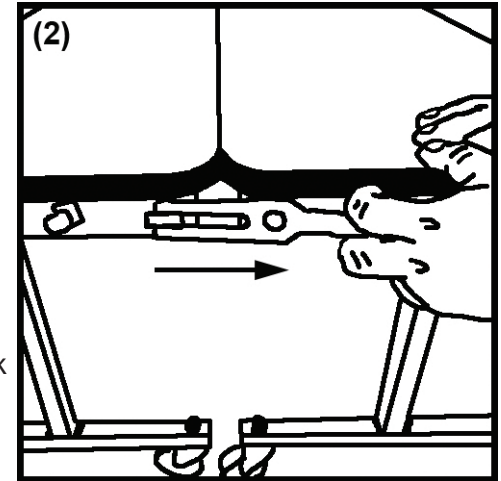
2) Release the rubber **ganging strap** from the storage catch by grasping the handle. Pull it off the catch while steadying the tops with your body and other hand.

3) Swing **ganging strap** over to the locking catch on the other unit. Check for proper engagement with catch. Repeat on opposite side.

See Figure '2':

4) Engage the **caster locks** (2 per table).

*Repeat steps in reverse to disengage.



Opening the Seat:

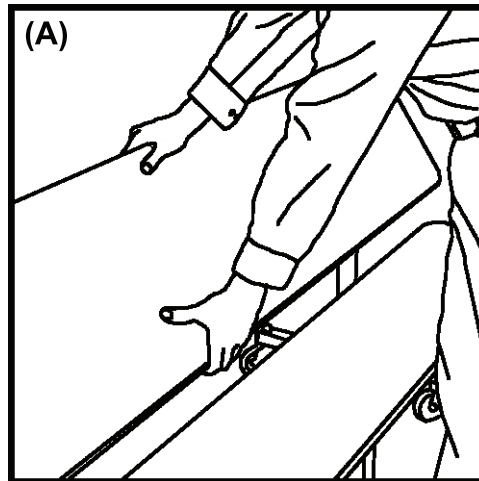
Grasp the seat in the center and slowly pull downward until the seat supports reach the floor.

Closing the Seat:

Grab the front of the seat while lifting toward the top. Push upwards at the center of the seat until it reaches the **storage position.**

Convert Bench Back to Table:

Grasp the back at the center while lifting upward until it locks into the **table top position.** **See Figure 'A':**



Convert Bench Table to Bench Back:

Stand at center of unit. Place one hand at the back and the other hand at the front. Gently lift upward to release the top from the **locked position.** Push the top forward toward the bench sliding it to the **bench back position.**

See Figure 'B':

