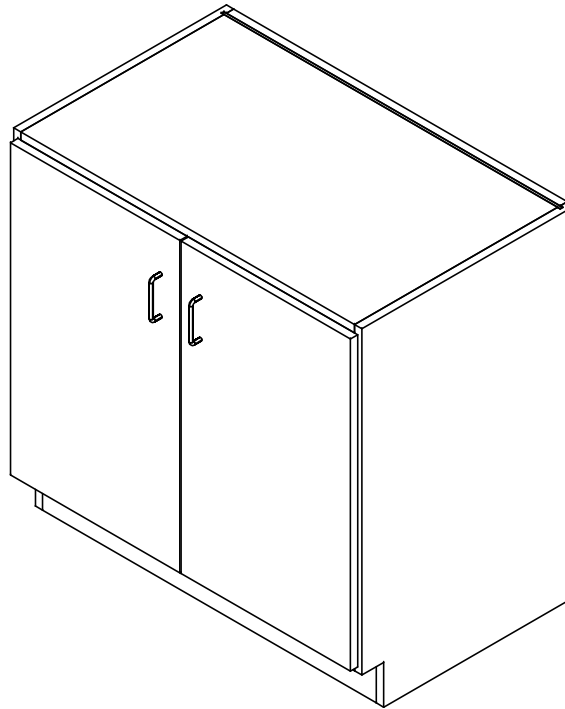


BASE CABINETS

ALL STANDARD BASE CABINETS ASSEMBLY INSTRUCTIONS



NOTE:

1. MODEL VIEWS MAY NOT REPRESENT EXACT MODEL PURCHASED

| | | | |
|---------|-----|-----------|--------|
| DWN BY: | EMK | DWN DATE: | 1/9/15 |
| APR BY: | | DATE APR: | |
| APR BY: | | DATE APR: | |

UNLESS OTHERWISE SPECIFIED
DIMENSION ARE IN INCHES
CABINET SQUARENESS ± .0625
FRACTIONAL VALUES ± 1/32"
- ALL VALUES ± OVERALL -



300 South Krueger Street
Suring, WI 54174
diversifiedwoodcrafts.com

TITLE:
**ALL STANDARD BASE CABINETS
ASSEMBLY INSTRUCTIONS**

| REV. | DESCRIPTION | DATE | NAME | ECN NO. |
|----------------|-------------------------------|--------|------|---------|
| A | CREATED ASSEMBLY INSTRUCTIONS | 1/9/15 | EMK | - |
| REVISION LEVEL | | | | |

THIS DRAWING IS THE SOLE PROPERTY OF
DIVERSIFIED WOOD CRAFTS. IT MAY NOT
BE ALTERED OR CHANGED WITHOUT
PERMISSION

| | | | |
|----------------------|--------|--------|-----------|
| DRAWING NUMBER: | SCALE: | SHEET: | REVISION: |
| BASE CABINETS | NTS | 1 OF 3 | REV A |

TOOLS REQUIRED

| |
|-------------------|
| CONTACT CEMENT |
| SCREW DRIVER |
| SILICONE ADHESIVE |

ASSEMBLY COMPONENTS

| ITEMS INCLUDED | PART # | PART DESCRIPTION | QTY |
|-------------------------|--------|--|--------|
| RUBBER BASE MOLDING | 100283 | RUBBER BASE MOLDING (SOLD BY FOOT) | VARIES |
| STAINLESS STEEL CORNERS | 100057 | CORNERS-STAINLESS STEEL,BASE | 2 |
| SCREWS - BASE | 100064 | SCREW,#6X $\frac{1}{2}$ PTH SMS SS SCREW | 8 |
| SCREWS - TOP | 100641 | SCREW,#8X1 $\frac{3}{4}$ " QUAD RD WASH HD | VARIES |

NOTE:

- USE SCREWS IF YOU HAVE A PLAM, CHEMGUARD, OR MAPLE TOP.
- USE SILICONE ADHESIVE IF YOU HAVE A PHENOLIC OR EPOXY TOP.

| | | | |
|---------|-----|-----------|--------|
| DWN BY: | EMK | DWN DATE: | 1/9/15 |
| APR BY: | | DATE APR: | |
| APR BY: | | DATE APR: | |

UNLESS OTHERWISE SPECIFIED
DIMENSION ARE IN INCHES
CABINET SQUARENESS ± .0625
FRACTIONAL VALUES ± 1/32"
- ALL VALUES ± OVERALL -



300 South Krueger Street
Surig, WI 54174
diversifiedwoodcrafts.com

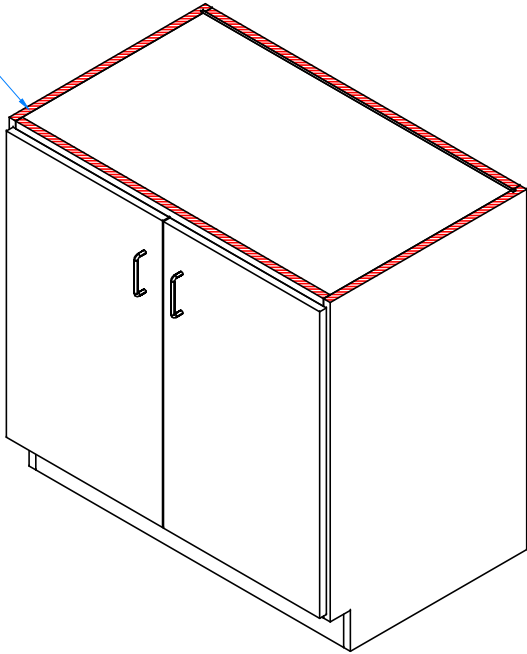
TITLE:
ALL STANDARD BASE CABINETS
TOOLS AND ASSEMBLY COMPONENTS

| REV. | DESCRIPTION | DATE | NAME | ECH NO. |
|------|-------------------------------|--------|------|---------|
| A | CREATED ASSEMBLY INSTRUCTIONS | 1/9/15 | EMK | - |
| | | | | |

THIS DRAWING IS THE SOLE PROPERTY OF
DIVERSIFIED WOOD CRAFTS. IT MAY NOT
BE ALTERED OR CHANGED WITHOUT
PERMISSION

| | | | |
|-----------------|--------|--------|-----------|
| DRAWING NUMBER: | SCALE: | SHEET: | REVISION: |
| BASE CABINETS | NTS | 2 OF 3 | REV A |

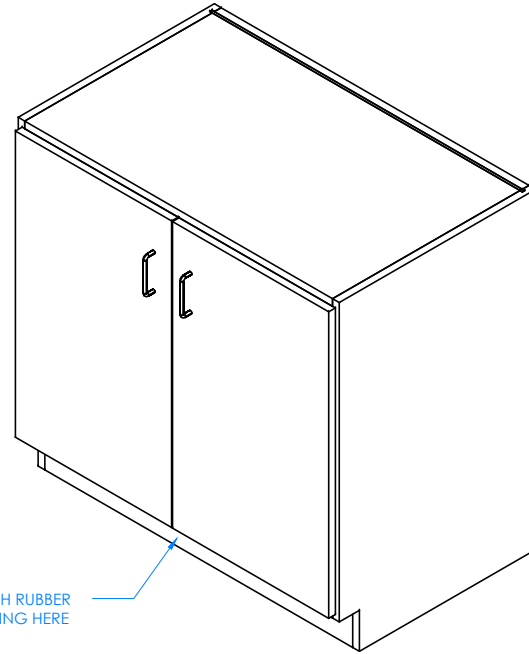
APPLY SILICONE ADHESIVE ALONG EDGES OF CABINET



STEP 1:

POSITION CABINET IN YOUR DESIRED LOCATION. LEVEL AND ANCHOR TO WALL. NOTE: CABINET MUST BE LEVELED OR DOORS AND DRAWERS MAY NOT OPEN OR CLOSE CORRECTLY . IF YOU HAVE A PHENOLIC OR EPOXY TOP, APPLY SILICONE ADHESIVE TO TOP EDGES OF CABINETS. CENTER TOP ON UNIT, ALLOW TO CURE FOR 6-12 HOURS . IF YOU HAVE A PLAM, CHEMGUARD, OR MAPLE TOP, ATTACH TOP BY GOING INSIDE CABINET AND SCREWING UP THROUGH THE TOP WITH THE SCREWS PROVIDED.

ATTACH RUBBER MOLDING HERE



STEP 2:

ATTACH RUBBER MOLDING TO BASE OF CABINET USING CONTACT CEMENT. AFTER MOLDING IS IN PLACE, SCREW STAINLESS STEEL CORNER BRACKETS ON EACH CORNER OVER THE BASE MOLDING WITH THE SCREWS PROVIDED.

NOTE:

1.

| | | | |
|---------|-----|-----------|--------|
| DWN BY: | EMK | DWN DATE: | 1/9/15 |
| APR BY: | | DATE APR: | |
| APR BY: | | DATE APR: | |



300 South Krueger Street
Suring, WI 54174
diversifiedwoodcrafts.com

UNLESS OTHERWISE SPECIFIED
DIMENSION ARE IN INCHES
CABINET SQUARENESS ± .0625
FRACTIONAL VALUES ± 1/32"
- ALL VALUES ± OVERALL -

TITLE:
**ALL STANDARD BASE CABINETS
ASSEMBLY INSTRUCTIONS**

| A | CREATED ASSEMBLY INSTRUCTIONS | 1/9/15 | EMK | - |
|------|-------------------------------|--------|------|---------|
| REV. | DESCRIPTION | DATE | NAME | ECH NO. |
| | | | | |

REVISION LEVEL

THIS DRAWING IS THE SOLE PROPERTY OF
DIVERSIFIED WOOD CRAFTS. IT MAY NOT
BE ALTERED OR CHANGED WITHOUT
PERMISSION

DRAWING NUMBER:

BASE CABINETS

| | | |
|--------|--------|-----------|
| SCALE: | SHEET: | REVISION: |
| NTS | 3 OF 3 | REV A |