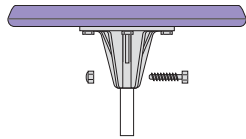


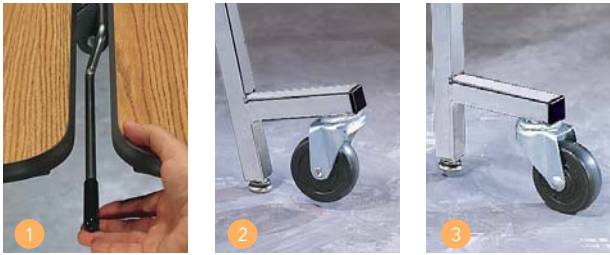
## Compare Virco Mobile Tables to the Competition:

- **Better Shipping:** Virco Cafeteria and Mobile tables ship on a custom built wood pallet to reduce damage during transport. The competition "rolls" their tables onto the truck for transport allowing the tables and casters to be damaged during delivery.
- **Stronger Bench Table:** Virco bench tables feature 3 support legs under each bench providing extra strength and durability. The competition provides only 2 support legs leading to bowing of the bench.
- **Superior Stool Table:** Virco stools are made of sturdy ABS with a multi-rib design and a die-cast aluminum mounting bracket for strength and durability. Compare this to the competition whose stools are made only from plastic.
- **Superior Mobile Tables:**



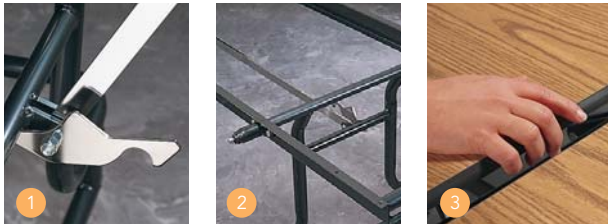
Stools are secured to their columns by an inset washer and a hex bolt with an aircraft lock nut.

### Mobile Folding Table Features



- 1 Tables feature a safety device that helps avoid pinched fingers during set-up. The device must be manually released before the table can be completely unfolded.
- 2 When round mobile tables are open, the table rests firmly on sturdy glides.
- 3 When folded for transporting, tables roll on 3" rubber wheels.

### Mobile Folding Table Features for model MT30144



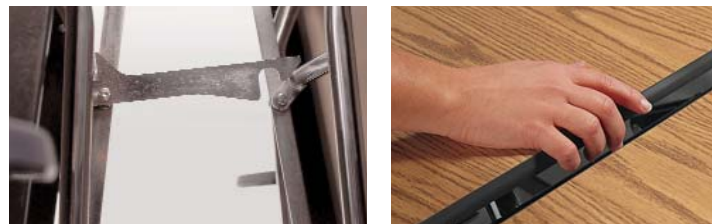
- 1 An up-lock mechanism holds tables in place while folded, and a down-lock mechanism holds tables in place when unfolded.
- 2 Torsion bars help tables fold and unfold smoothly.
- 3 Clearance between table tops helps avoid pinched fingers.



Virco's Mobile Tables are shipped with protective cardboard and banded to the pallet reducing freight damage.

- **No Upcharge for a Chrome Finish:** Virco mobile tables come standard with a chrome frame. Chrome provides a superior, long lasting finish as compared to powder coat which can become easily scratched allowing the steel underneath to rust and creating a potential sanitary hazard.
- **Better Locking Mechanism:**

### Mobile Bench and Stool Table Features



Every Virco bench and stool table has an individual locking mechanism designed to hold it in place when in use. These models are also equipped with an up-lock device that engages when the table is folded.

Clearance between table tops helps avoid pinched fingers on all 12' models.



*Virco Mobile Tables ship on custom built wooden pallets for easy handling and to reduce damage. During transport, the weight of the table is supported by the table frame and the pallet nearly eliminating damage caused to casters.*



*Virco's Mobile Tables are in stock and ready to ship.*